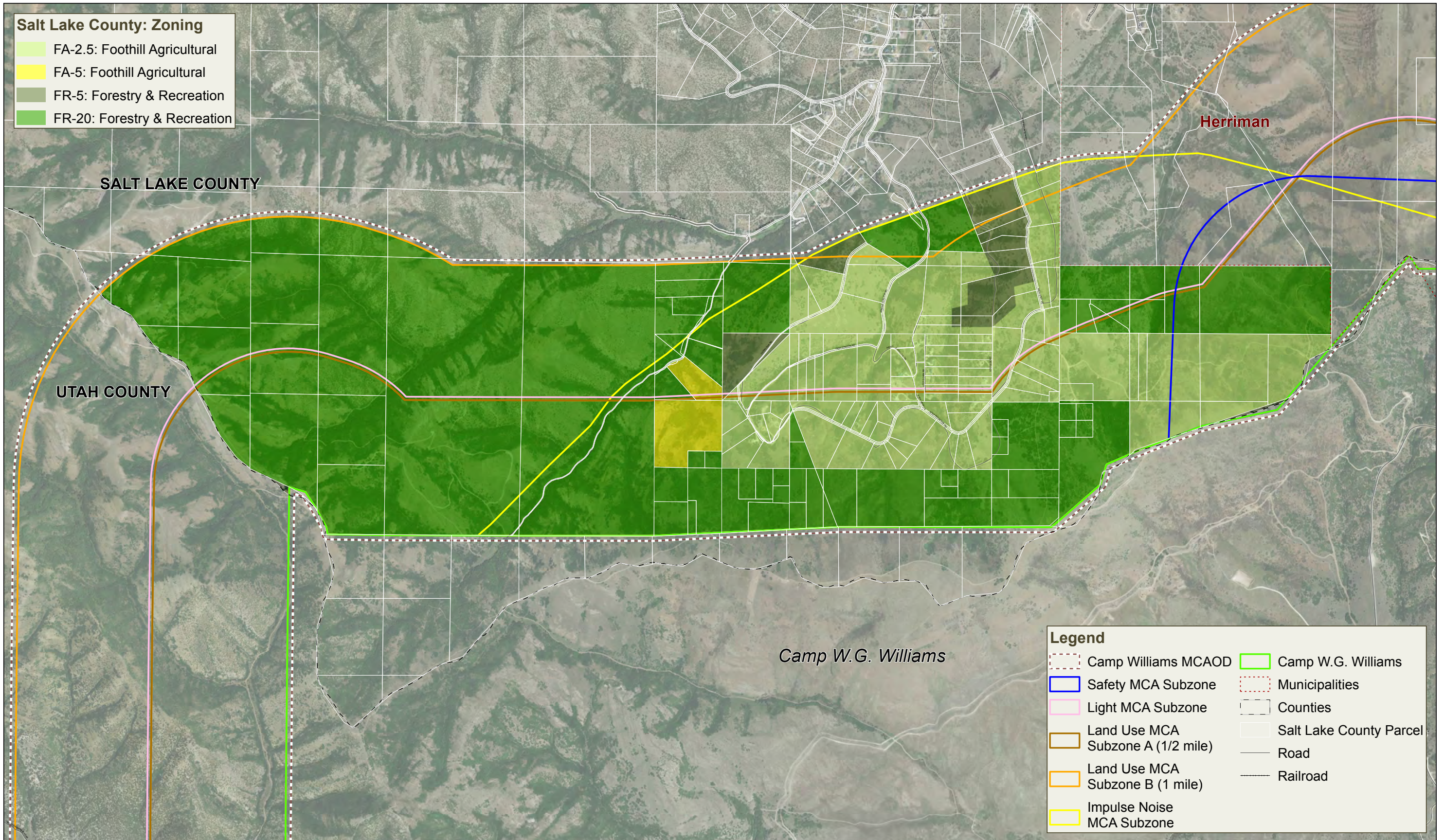


**Salt Lake County: Zoning**

- FA-2.5: Foothill Agricultural
- FA-5: Foothill Agricultural
- FR-5: Forestry & Recreation
- FR-20: Forestry & Recreation



**Legend**

<span style="border: 1px dashed black; display: inline-block; width: 15px; height: 10px;"></span> Camp Williams MCAOD	<span style="border: 1px solid green; display: inline-block; width: 15px; height: 10px;"></span> Camp W.G. Williams
<span style="border: 1px solid blue; display: inline-block; width: 15px; height: 10px;"></span> Safety MCA Subzone	<span style="border: 1px dashed red; display: inline-block; width: 15px; height: 10px;"></span> Municipalities
<span style="border: 1px solid pink; display: inline-block; width: 15px; height: 10px;"></span> Light MCA Subzone	<span style="border: 1px solid gray; display: inline-block; width: 15px; height: 10px;"></span> Counties
<span style="border: 1px solid brown; display: inline-block; width: 15px; height: 10px;"></span> Land Use MCA Subzone A (1/2 mile)	<span style="border: 1px solid gray; display: inline-block; width: 15px; height: 10px;"></span> Salt Lake County Parcel
<span style="border: 1px solid orange; display: inline-block; width: 15px; height: 10px;"></span> Land Use MCA Subzone B (1 mile)	<span style="border-bottom: 1px solid gray; display: inline-block; width: 15px;"></span> Road
<span style="border: 1px solid yellow; display: inline-block; width: 15px; height: 10px;"></span> Impulse Noise MCA Subzone	<span style="border-bottom: 1px dashed gray; display: inline-block; width: 15px;"></span> Railroad



**Salt Lake County: Military Compatibility Area Overlay District (MCAOD)**